



Black Construction Corporation Excellence Newsletter

April 20, 2012

Safety Mission Statement

"To establish, through open communication and a spirit of cooperation from all Black Construction Corporation employees, an environment that promotes and practices safety awareness and achieves a company-wide accident and injury free working environment."

Inside This Issue

- 1 Message from the GM
- 2 Completed Projects
- 6 MSDOnline
- 6 VPP News
- 7 Safety Committee In Action
- 8 Unguarded Rebar
- 9 Photo Gallery
- 11 Safety in the Office

Message from the General Manager

Ladies and Gentlemen,

Since my last message, the news of the military buildup from both local and national media has gained a lot of attention within our industry. With budgetary cuts taking place at the national level

due to the deficit, the Department of Defense military construction program was not left unscathed. This along with the added pressures from congress has resulted in the continuing delay of the military buildup process here on Guam. We certainly can't control the political voices as they continue the debate of whether "to buildup, or not to buildup" and to what scale, but we do have control over how we plan to deal with this temporary setback. With that said, I will be traveling to other areas within the region to seek every available business opportunity in order to secure workload for our future. So let us reaffirm our commitment as a company and prepare ourselves to meet the challenges that lie ahead. We have been successful in the past, and together we will succeed once again.



due to the deficit, the Department of Defense military construction program was not left unscathed. This along with the added pressures from congress has resulted in the continuing delay of the military buildup process here on Guam. We certainly can't control the political voices as they continue the debate of whether "to buildup, or not to buildup" and to what scale, but we do have control over how we plan to deal with this temporary setback. With that said, I will be traveling to other areas within the region to seek every available business opportunity in order to secure workload for our future. So let us reaffirm our commitment as a company and prepare ourselves to meet the challenges that lie ahead. We have been successful in the past, and together we will succeed once again.

Congratulations to the Sandy Beach Homes, IDI Warehouse, Beans Bridge, Double Bitt Replacement, Agana Marina Renovations, PACDIM and Sierra Fender Repair teams for successful project completions. Your outstanding performance in the key areas of safety, quality and customer satisfaction has once again set the standard of professionalism for Black. KUDOS to ALL!

Today, we must focus our attention and efforts on the North Ramp Parking project up in AAFB. And through our small business protégé Overland Corporation, the North Ramp Parking Communication Duct Bank, Commando Warrior Open Bay Student Barracks, Red Horse Headquarters, Victor Wharf Repairs and the Repair of the Glass Breakwater projects have provided us with much needed revenue by augmenting our workload during this period. Off shore, the Runway Overlay and Airfield Improvements, Lelu and Utwe Elementary Schools and Public Safety and Jailhouse Building projects in Kosrae have kept our BMC operations solvent as well. I'd like to take this opportunity to commend our in-house estimating, engineering and construction team for your tireless effort, dedication and commitment to ensure our workers in the field are fully supported.

Our EEBlack family has also been busy as well with the recent award of thirteen new projects. Mr. Villegas and his staff continue to diversify and expand their opportunities beyond their traditional mission. I have the utmost confidence in their management and operational ability to be successful. Let us reach out and support our EEBlack team throughout this effort.

And lastly, I thank each of you for contributing to our exemplary safety program. I'm extremely proud of this accomplishment and ask that each of you make every effort to continually improve this process each and every day. We have proven ourselves to be a resilient company and together we will continue to succeed in whatever we do. We will not accept anything less.

LKK

COMPLETED PROJECTS



SANDY BEACH HOMES, SAIPAN

Contract Information:

Project Name and Job #: SANDY BEACH HOMES LLC, JOB NO. 0316

NTP/Award Date: 06 DECEMBER 2010

Original Completion Date: 15 DECEMBER 2011

Revised Completion Date:

Contract: 369 Calendar days (Contract period)

Description of Work:

The \$15,995,000US contract is an affordable housing project as part of the American Recovery and Reinvestment Act (ARRA) funds. The Project consists of 60 units made up of 3 bedroom 2 bath apartment units. The MAT foundation includes grade beams throughout requiring 3200 cubic yards of concrete. The Structural Frame is made up of cast in place columns, walls and beams with pre-stressed, planks and topping completing the composite concrete frame to seven stories including the roof, parapet and reserve water tanks. The interior/exterior finishes are complimented by island style tile and Bahama shutters and Grilles creating a unique affordable housing project. We also built a precast bed at Hawaiian Rock Products Yard in Saipan to cast the Pre-stressed planks for the project.

Contributed by: Jack Travers



CONGRATULATIONS TO TEAM BLACK ON AN OUSTANDING JOB!

COMPLETED PROJECTS

IDI WAREHOUSE

Contract Information:

Project Name and Job #: International Distributors, Inc. "IDI WAREHOUSE", JOB NO. 1010

NTP/Award Date: 05 FEBRUARY 2011

Original Completion Date: 07 OCTOBER 2011

Contract: 240 Calendar days (Contract period)

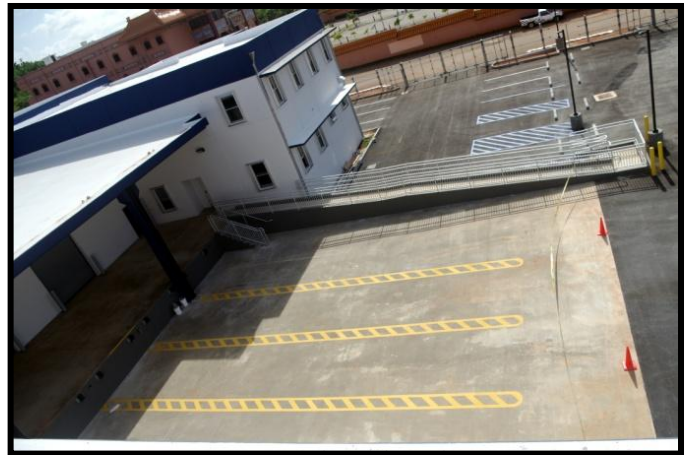
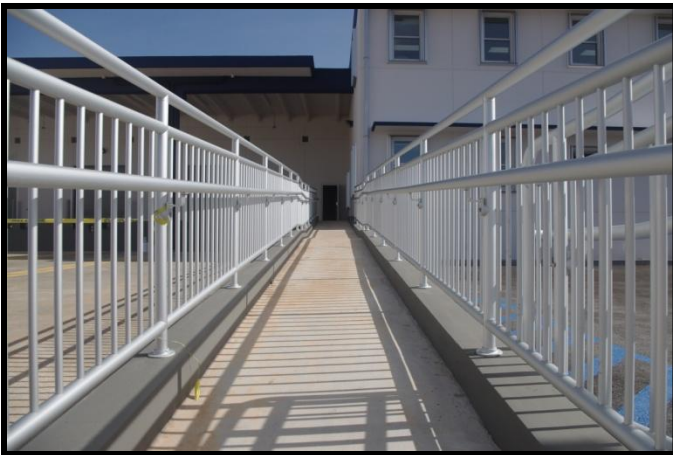
Description of Work:

The \$3,278,000US 32,000 sq. ft. cold storage building located in Boman St., Barrigada is the new headquarters and main facility of the International Distributors, Inc. a main food distributor in the island.

The scope of work included the structural shell, exterior painting, civil works, storm drainage and plumbing systems. BCC initiated the redesign of the structure from the original cast in place walls to the tilt up system. The project exceeded the expectations of the owners with regards to quality, time and safety.

NOTE: BCC was responsible for collaborating & coordinating layout requirements for other construction trades not part of this specific Scope of Works, such as electrical, windows, doors, refrigeration systems, etc.

Contributed by: Melchor Francisco



CONGRATULATIONS TO TEAM BLACK ON AN OUSTANDING JOB!

Borrow money from pessimists, they don't expect it back.

COMPLETED PROJECTS

BEANS BRIDGE

Contract Information:

Size of Project: Two acres
 Contract Value: \$1,887,000
 Length of Project: 270 Calendar Days
 Project was completed 12 Days ahead of schedule.

Description of Work:

The replacement of Bean's Bridge posed key challenges in both design and construction. Two of the greatest challenges were (1) to maintain the water supply during construction and (2) minimize impact to the wetlands. Equally challenging was the site access and work area. The construction sequence involved challenging crane setups.



The BCC team, with our partners Overland Corporation and GHD (Winzler & Kelly), proposed a 110 foot span aluminum truss bridge to clear span the wetland area. The aluminum bridge was a departure from the RFP pre-cast concrete double tee bridge and was awarded as a "best value" (not lowest price) to the Government. The aluminum bridge, supported by concrete abutments on each end, and the bridge abutments, were also located outside the wetlands boundary which offered several benefits.

- Reduced impact to the wetlands by elimination of intermediate supports
- Reduced environmental impact by eliminating the need for a temporary structure or heavy equipment in the wetlands
- Reduced risk of destabilizing the existing waterline by significantly reducing or eliminating pile driving and drilling in close proximity to the existing structure
- Reduced permitting requirements and schedule due to fewer disturbances in the wetlands
- Offsite bridge fabrication that started while foundations were under construction resulted in a reduced construction schedule
- The aluminum bridge, which was unique to BCC's proposal, weighed much less than the specified pre-cast double tee concrete structure and allowed the entire span to be lifted into place in a single lift

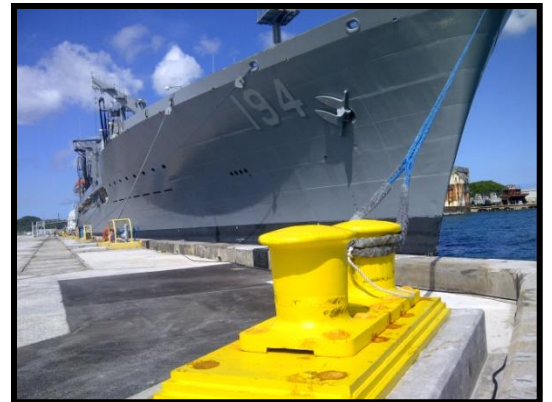
Site Superintendent: Art Demanarig; Mechanical Superintendent: Orly Nojadera; General Foreman: Dionisio "Palau" Anos, Jr; Mechanical Engineer: Johnny Sol; Mechanical Foreman: Eric Lopez

REPLACE DOUBLE BITT

Project Description:

This design build project located on NBG at Romeo Wharf in Apra Harbor, consisted of replacing a double bitt mooring bollard with associated civil and structural renovations. The project team included Overland Corporation and GHD (Winzler & Kelly) as the designers. The project included:

- Removal of existing cast iron bollard and installation of new double bitt bollard
- Installation of new concrete grade beam and bollard pedestal
- Welding of steel plates to cover corrosion holes in the existing sheet piles
- Backfill and restoration of asphalt paving
- Spall and crack repairs on the existing wharf pile cap rail



Contributed by: Bruce Johnson

CONGRATULATIONS TO TEAM BLACK ON AN OUTSTANDING JOB!

COMPLETED PROJECTS

REPAIR FENDER HARDWARE SYSTEMS

Art Demanarig and his team wrapped up the Fender Hardware Repair project in early April, ahead of schedule on a very short fused project that was compounded by busy port operations. The key to the success of the project was an attitude of adaptability that resulted in the crew being able to work around a busy port ops berthing schedule. The in-house designed and fabricated work platform proved to be an extremely valuable asset when leaping over barges, cutters and submarines!

This \$470 task order with Overland Corporation was completed in 170 days and involved replacing the fender hardware system, removing the existing chains and padeyes and patching the old fastener anchor bolt holes. Specific activities included:

1. Core drilling the bulkhead for installation of new stainless steel anchor bolts (280 each).
2. Mounting new stainless steel padeyes.
3. Install new hot dipped galvanized stud link chain and shackles.
4. Removing existing anchor bolts and padeyes.
5. Patching old AB fastener locations.

The original production target for drilling the new anchor bolt holes was 8 holes per day. Thanks to an organized work effort and the right equipment the crew achieved a single day high of 28 holes and averaged over 20!

Hat's off for a job well done to Art and Junior "Palau" Anos and to Joe Fourby for establishing a safe approach to the work at hand. Great job team!!

Contributed by: Bruce Johnson



CONGRATULATIONS TO TEAM BLACK ON AN OUTSTANDING JOB!

"Life would be infinitely happier if we could only be born at the age of eighty and gradually approach eighteen."

Mark Twain

MSDSOnline

As a component to the Hazardous Communication Standard, Material Safety Data Sheets or MSDS is a detailed information bulletin prepared by the manufacturer or importer of a chemical that describes the physical and chemical properties, physical and health hazards, routes of exposure, precautions for safe handling and use, emergency and first-aid procedures, and control measures. BCC has an electronic system which is user friendly and allows easy access to Material Safety Data Sheet (MSDS) files for convenience purposes. Below is a list of employees that have direct access to the MSDSOnline program.

Joseph Castro, MSDSOnline Administrator

BCC User's

Avelino Lazaro
Benjie Herrera
Cindy Baza
Daniel Soriano
Dante Rebujo
Eddie Dave
George Ignacio
Harry Higa
Joaquin Salas
Joseph Fourby

Joseph Leasiolagi
Lori Castro
Marco Rebullar
Marcus Aguon
Melissa Perez
Nathan Torres
O'Neal McAfee
Randy Godoy
Victor Formoso



These employees will establish and maintain the office/shop/project Material Safety Data Sheet program. They will ensure that procedures are in place that maintains the necessary MSDSs and that new ones are reviewed for new or significant safety and health information. Any new information will be immediately communicated to employees and added to the MSDS storage locations. Copies of Material Safety Data Sheets for all hazardous chemicals to which employees may be exposed will be made available at each site.

MSDSs will be available to all employees in their work area for review during each work shift. If MSDSs are not available or new chemicals in use do not have an MSDS, employees may not use the chemical, and they will immediately contact any one of the individuals listed above.

If a MSDS is not received with a shipment of chemicals, those chemicals will be kept away from employees and out of use in a staging area until a proper MSDS is obtained. Old material safety data sheets that are no longer applicable must be removed from the MSDS binder.

NOTICE

**MSDS
FORMS
IN
OFFICE**

VPP NEWS

Although there is still a lot more work ahead of us before our application is submitted to OSHA, our VPP committees continue to move forward in a very positive manner. The Steering Committee has reviewed and made changes to our Safety Incentive Program so we can begin the process of recognizing and rewarding employees who perform their jobs safely and contribute significantly to safety and health in the workplace. The Safety Committee is tasked to visit each shop, office and project site to explain the program elements and the nomination process.

The Steering Committee has also introduced a five year Strategic Safety Plan (SSP) to our VPP process in order to satisfy program requirements. The committee is currently reviewing the SSP and will assign responsibility for each action so we can move forward with the four strategic outcome and performance goals.

The Steering Committee welcomes new members Dave Bush, Daniel Soriano and Barbara Ashe to the group. Dave will also serve as Chairman of the revitalized Auditing Committee and Barbara has been selected as the Steering Committee recorder.

Once again, the committees would like to reach out and solicit your support by volunteering your time and expertise to contribute in the VPP process. As well as adding to your professional and personal development, as volunteers you are providing invaluable and irreplaceable capacity which enables the BCC VPP Team fulfill its objectives.



SAFETY COMMITTEE IN ACTION

Our Safety Committee's objective is to bring workers and managers together to achieve and maintain a safe, healthful workplace, find solutions to problems that cause workplace accidents, illnesses, and injuries, develop a Wellness Program, conduct a Process Improvement study, and to provide information, guidance and feedback on new procedure standards to allow the committee the ability to achieve established objectives necessary for the processing of our VPP application to OSHA Outreach.

Pictured to the right are your Safety Committee Members. (Standing L-R) Peter Aguon, Randy Godoy (Chairperson) and Fred Mendiola (Sitting L-R) Dawna Balgame, Melissa Perez (Co-Chairperson), Lori Castro and Lena Pangelinan (Not pictured: Manuel "Sakau" William and Harry Higa)



As part of their mission of becoming more visible company wide, the committee scheduled site visits to the various projects to encourage employee involvement, distribute safety information and to conduct safety inspections. This dedication and commitment to their mission is commendable and should be supported by all.

Photos:

- ✚ Site visit to the IDI Warehouse project
- ✚ Talofoto Bridge Girder Installation
- ✚ Safety Committee with Talofoto Bridge Crew
- ✚ Commando Warrior Barracks Topping Off Ceremony
- ✚ Safety Committee with PACDIM Crew



If you are interested in joining the Safety Committee, please contact Randy Godoy or Melissa Perez. Suggestions for sports or other wellness related activities that you would like to participate in are also welcomed.

Special thanks to Nathan Torres for photo contributions

UNGUARDED REBAR

Unguarded Protruding Steel Rebar

Am I In Danger?

Unguarded protruding steel reinforcing bars are hazardous. Even if you just stumble onto an unguarded rebar you can impale yourself, resulting in serious internal injuries or death.

These rebar should be bent over or protected with caps so that a worker would not be injured by falling on them. (Right Photo)

How Do I Avoid Hazards?

- Guard all protruding ends of steel rebar with rebar caps or wooden troughs, or
- Bend rebar so exposed ends are no longer upright.
- When employees are working at any height above exposed rebar, fall protection/ prevention is the first line of defense against impalement.

Rebar Caps

The OSHA Standard requires that rebar "be guarded to eliminate the hazard of impalement." Not all guards provide that level of protection. In some circumstances, the force of a fall can cause rebar to push clear through a plastic cap and still impale a worker, or the worker can be impaled by the rebar and the cap together. (Top Right Photo)

Only rebar caps designed to provide impalement protection, such as those containing steel reinforcement, should be used. (Middle Right Photo)

This type of cap positions a 2 x 4 over the exposed rebars, and has been approved by OSHA. (Bottom Right Photo)

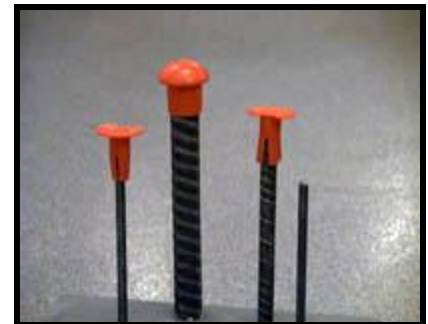


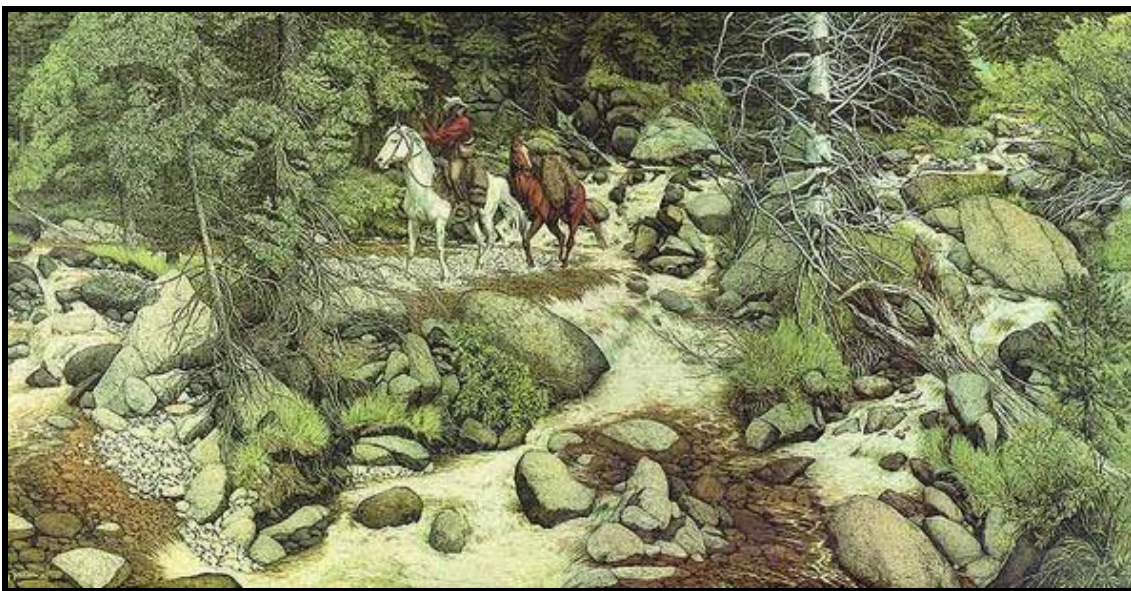
PHOTO GALLERY – CHRISTMAS 2011



PHOTO GALLERY – CHRISTMAS 2011



There are 13 faces hidden somewhere inside this optical illusion below. Can you find them all?



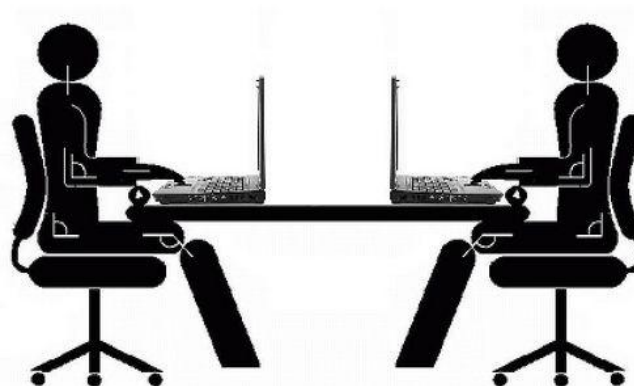
"If your strength is small, don't carry heavy burdens. If your words are worthless, don't give advice."

SAFETY IN THE OFFICE

Accidents do happen in the office. Few office workers realize that they are twice as likely to be injured in a fall as a non-office worker. Nationally, only automobile accidents out number falls as the leading cause of all accidents. In the office slips, trips and falls are the number one cause of disabling injuries.

Thinking and working safely can prevent most accidents. You can become aware of the most common hazards in the office environment. The following are some examples of common hazards and what you can do to prevent them from becoming accidents.

1. Don't lean back in your chair. Keep all legs on the floor so that you do not end up on the floor. Take time to reach out and hold on to the chair as you sit down. Be sure that the chair is beneath you as you sit.
2. Keep the floor and walkway clear of electrical, telephone and computer cables, boxes, etc. They are tripping hazards waiting to happen.
3. Close one drawer in a filing cabinet before opening another. This prevents the file cabinet from tipping over on you.
4. Close the drawer in your desk before getting up and close file drawers before walking away from the file cabinet. This prevents the danger of people walking into an open file drawer or desk drawer.
5. Store supplies inside cabinets, not on top of them. Store heavy items in lower drawers or on low shelves.
6. Watch out for slippery surfaces. Spilled drinks or water from umbrellas are typical hazards and need to be cleaned up/or identified immediately.
7. Look where you are going. Don't block your view by carrying loads higher than eye level.
8. Don't read while walking. It doesn't save enough time to justify the risk.
9. Walk, do not run. Please slow down.
10. Don't climb on chairs, desks or boxes. Use a step ladder instead.
11. Hold onto handrails when using stairways.
12. Use elevators when carrying boxes if they are available.
13. Don't throw matches, ashes or cigarette butts into wastebaskets. If the building has been designated as a smoke free building - DO NOT smoke in the building.
14. Don't overload wall sockets and extension cords.
15. Don't touch electrical switches, sockets, plugs, etc with wet hands.
16. Don't eat or drink at a computer station. It could result in malfunction of the computer and void the warranty.
17. Watch for unsafe conditions such as defective equipment, burned out lights, loose steps, torn carpet, etc and report them to your supervisor immediately.



Symbol of Excellence



**EVERYONE DESERVES A
FUTURE!**